

# **deskPDF® 2.5 Standard User Guide**



Product Release: 2.5  
Part No. UGstd-002-50  
Published: May 11, 2005

### **Copyright**

Copyright © 2005 Docudesk – Maketech Systems, Inc. All rights reserved. This material is protected by the copyright laws of the United States and other countries. It may not be reproduced, distributed, or altered in any fashion by any entity (either internal or external to Docudesk), except in accordance with applicable agreements or contracts of licensing, without the express written consent of Docudesk – Maketech Systems, Inc.

### **Notice**

Every effort has been made to ensure that this document is complete and accurate at the time of release, but information is subject to change. The specifications and other information in this document regarding the product(s) described in this document are subject to change without notice. All statements, information and recommendations contained in this document are believed to be accurate but are presented without warranty of any kind, express or implied. Users must take full responsibility for their application of any product. While Docudesk has made every effort to ensure the accuracy and completeness of this document, Docudesk assumes no responsibility for the consequences to users of any errors that may be contained herein. Docudesk, reserves the right to revise this document and to make changes in its content without notification of such action. Product specifications are subject to change without notice.

### **Trademarks**

Docudesk, deskPDF, and the Docudesk slanted “D” logo are trademarks of Maketech Systems, Inc. All other trademarks are properties of their respective owners.

# Preface

## Overview

deskPDF is a PDF authoring tool which converts virtually any non-standard document type into the universally recognized PDF document format standard. deskPDF utilizes the Portable Document Format (PDF) standard to allow secure, convenient and cost effective document publishing within *and* across hardware, software, and geographic boundaries.

## Purpose

This guide is intended to show how to use the features found within deskPDF Standard. For information on product installation, product registration, deskPDF Standard features, or enterprise deployment; please refer to the appropriate document located at [www.docudesk.com/download.asp](http://www.docudesk.com/download.asp)

## Conventions

This guide uses textual and graphical conventions to simplify comprehension of its contents.

### Text Conventions

The table below highlights the text conventions used in this guide

Convention	Explanation	Example
Alternate mouse click	Usage of the right mouse button	Select the "print to PDF Function using the <i>alternate mouse click</i>
Arrow →	Indicates the selection order of menu items	File → Save This indicates go to the File menu and select the Save function
<b>Bold</b>	Indicates user input	Press the <b>Enter</b> key
Click	Usage of the default mouse button	<i>Click</i> the deskPDF properties window to show additional configuration options.

## Icons

The following icons are used in this guide:



**Note:** A note is an informational message containing a suggestion or a tip



**Alert:** An alert icon is a message to follow instructions closely

## Table of Contents

<b>Preface</b> .....	3
Overview.....	3
Purpose .....	3
Conventions .....	3
Text Conventions.....	3
Icons.....	4
Table of Contents .....	5
<b>Introduction</b> .....	7
Overview.....	7
Audience .....	7
<b>System Requirements</b> .....	8
Hardware.....	8
Software.....	8
<b>Getting Started</b> .....	9
Creating PDF's with deskPDF Standard .....	9
From the Print Menu .....	9
Desktop Drag & Drop .....	11
deskPDF Right-Click Conversion.....	12
<b>deskPDF Configuration</b> .....	13
Overview.....	13
Advanced Properties.....	13
Advanced Options .....	15
General Tab.....	15
Display Tab .....	16
Display Tab - Viewer Preferences.....	17
Application Tab .....	17
<b>Miscellaneous Notes</b> .....	19
Supported Languages .....	19
deskPDF Administration .....	19
Additional PDF Information .....	19
<b>Upgrading</b> .....	20
Upgrading from a Previous Version.....	20
<b>Known Issues</b> .....	21
Bugs/Compatibility/etc.....	21



# Introduction

## Overview

Thank you for purchasing Docudesk's deskPDF Standard Edition, a leading product in electronic document publishing automation. This guide is designed to help readers gain a solid understanding of the unique features of deskPDF to address the most challenging document publishing requirements.

This guide is intended to address those features found in version 2.5 of deskPDF Standard Edition.

## Audience

Docudesk's deskPDF is an easy to use yet powerful application which has many features available for both advanced publishing experts as well as beginners whom are new to document conversion and publishing. This guide is intended to help both users and systems administrators with deskPDF's extensive capabilities.

Users just getting started in PDF creation or users with years of experience will find this guide helpful. Users in both skill sets are encouraged to read through this document thoroughly to make the most of deskPDF's feature set.

# System Requirements

## Hardware

deskPDF can operate effectively on a very basic or dated system configuration; however, to ensure a satisfactory experience in the processing of large documents the system should have at least the following specifications:

- Processor: 100 Mhz x86 Processor
- RAM: 32 Megabytes
- Available Hard Drive Space: 30 Megabytes

Alternatively, as a rule of thumb, if the system performs the printing requirements of Microsoft Office documents satisfactorily, deskPDF will perform well.

## Software

deskPDF's requires the Microsoft Windows operating system to be installed on prior to installation of deskPDF. The following versions of Microsoft Windows are supported in deskPDF 2.5 Standard Edition:

- Microsoft Windows 98
- Microsoft Windows ME
- Microsoft Windows NT 4.0 Workstation/Server
- Microsoft Windows 2000 Professional/Server/Advanced Server
- Microsoft Windows XP Home/Professional
- Microsoft Windows Server 2003

# Getting Started

## Creating PDF's with deskPDF Standard

The deskPDF application can be configured in several different ways to address quality settings, security, and particular formatting needs. This section, *Getting Started*, provides a quick introduction into how to create a PDF in the most basic sense. Subsequent sections address advanced deskPDF Standard configurations and options.

## From the Print Menu

There are several methods to create PDF documents using deskPDF; however, initiating deskPDF from the document print function is the most popular. To initiate this process open the document which you wish to convert in the application of choice (i.e. Microsoft Word, AutoCad, etc.). Go to the **Print** menu. This is accomplished in Microsoft Word by entering **ctrl + P** on the keyboard or by going File → Print on the menu bar. **Select** the *deskPDF printer* option on the print menu then **Click** the OK button (*Figure 1*).

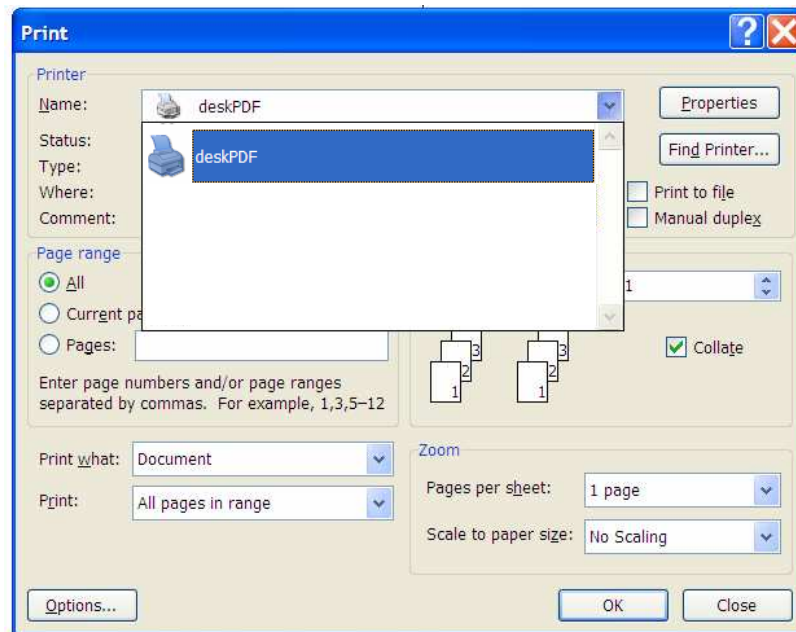
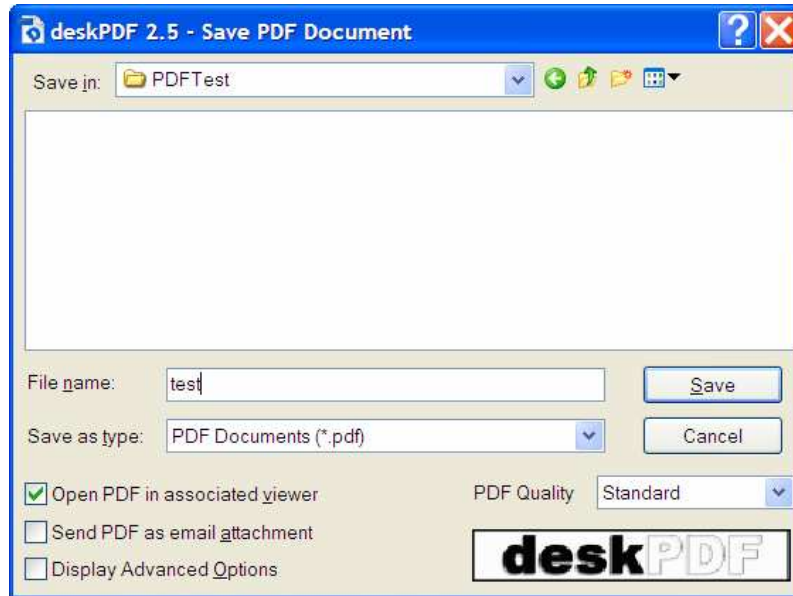


Figure 1



**Figure 2**

Figure 2 prompts the user to select the file location to store the newly created PDF document. There are several options presented to the user on this screen. The same settings which were made in previous conversions will be made in subsequent conversions. These “sticky settings” will be overridden if the user changes manually them or if a pre-defined profile is selected. Refer to *deskPDF Configuration* for more information on profiles.

The following options are available:

- **Open PDF in associated viewer** – selecting this option will automatically present the new PDF in the default viewer. (i.e. Adobe Acrobat Reader). This option is disabled if no viewer is detected.
- **Send PDF as email attachment** – if an email client has been properly configured, this option will automatically create a new email with the PDF added as an attachment.
- **Display Advanced Options** – this option displays additional options which the user can apply to the final PDF document. (Details of this option will be displayed in the following section)
- **PDF Quality** – allows the user to create PDF’s of differing quality at the expense of file size. The following preconfigured options are provided.
  - **Web/Email:** Image quality is reduced to minimize overall file size to make the file better suited for slow connections
  - **Standard:** Fonts are embedded in the PDF and the images are better quality than that of the *web/email* option.
  - **Print:** Image quality is improved over the *Standard* option file overall file size also increases.

- **Prepress:** Best overall quality, largest file size.



**Note:** The Standard option provides a good balance between image quality and file size. Selection of the other options should be considered if using low bandwidth connections or preparing a document for high quality publication.



**Note:** Custom PDF quality settings can be made by editing the joboptions files in C:\Program Files\Docudesk\deskPDF\QOptions\. Simply duplicate an existing joboptions file and adjust the desired parameters. The next time deskPDF is launched the newly added quality setting will be presented.



**Alert:** At this point, after entering the filename and file location along with selecting a PDF Quality setting, a PDF can be created. After making the selections, Click **Save** to create your PDF document. If any options are selected, they will be executed when the document is saved.

## Desktop Drag & Drop

One of the feature options which is provided with deskPDF 2.5 is a utility which allows for users to quickly drag & drop documents onto the deskPDF desktop icon to convert the document into a PDF.

To use this feature, simply **single Click and hold** the mouse button over the selected source document and while holding the mouse button **drag** the document on top of the deskPDF icon shown in *Figure 3* and **release** the mouse button.

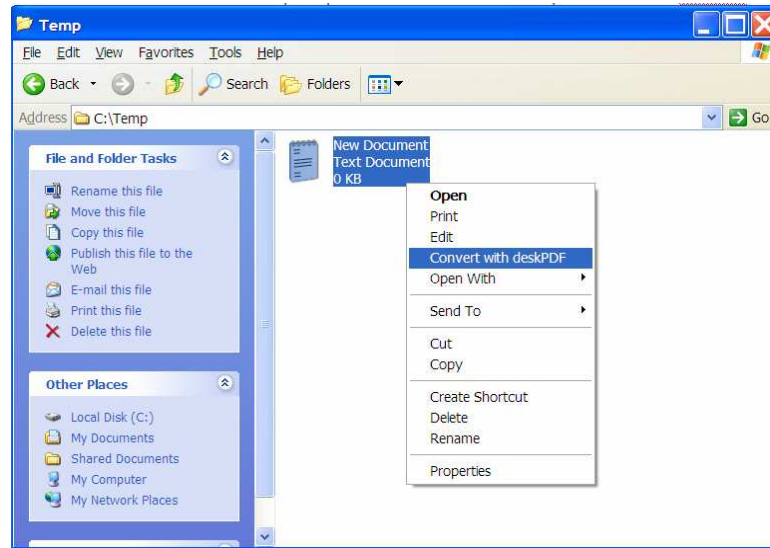


**Figure 3**

This action will initiate the PDF creation process. The user will be presented with the print window as shown in *Figure 2*. Follow the steps shown following *Figure 2* to complete the process.

## deskPDF Right-Click Conversion

Another feature option presented at installation is the placement of the deskPDF file conversion option within the right click menu. To access this feature make an Alternate Mouse Click on the document to be converted either within windows Explorer (also known as File Manager) or on the Windows desktop. This sequence is illustrated in *Figure 4*.



**Figure 4**

Selecting the *Convert with deskPDF* menu option, will initiate the PDF creation process. Next the user will be presented with the print window as shown in *Figure 2*. Follow the steps shown following *Figure 2* to complete the process.

# deskPDF Configuration

## Overview

In most instances the default configuration will support the majority of users' needs. However, there are advanced options which can be utilized to modify deskPDF to support unique requirements.

Many of the enhancements of deskPDF Standard version 2.5 are found in the advanced configuration and advanced options settings.

## Advanced Properties

The *Advanced Properties* window is accessed by going to the **Print** menu. This is accomplished in Microsoft Word by entering **ctrl + P** on the keyboard or by going **File → Print** on the menu bar. **Select** the *Properties* button. The following windows shown in *Figure 5* are then displayed. The *deskPDF Advanced Options* window in the foreground is available following selection of the *Advanced* tab.

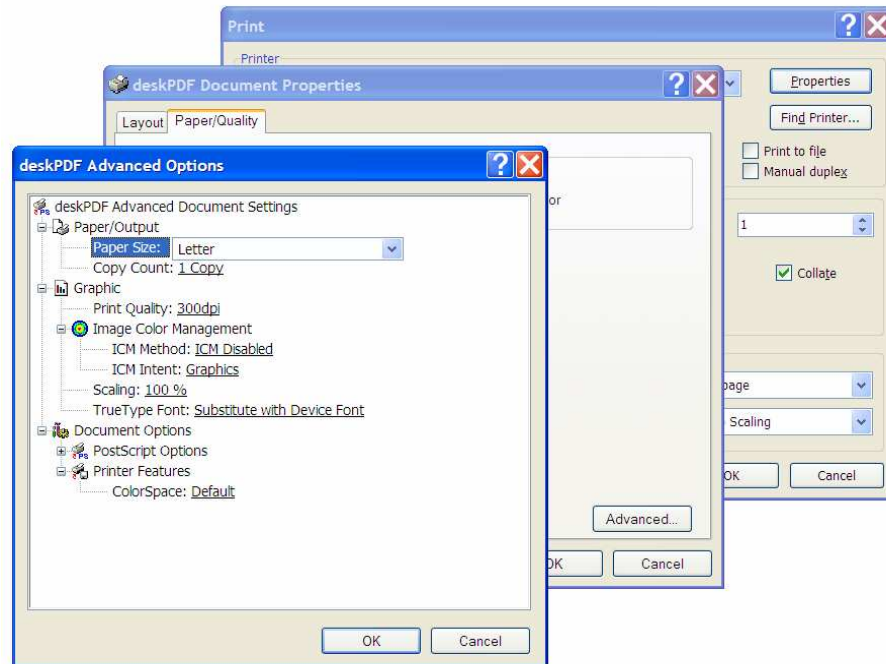


Figure 5

In the initial *deskPDF Document Properties* window, users can select whether the PDF output is provided in color or black & white.

Selection of the *Advanced* button presents users with the Advanced Options window.



**Alert:** Users should make note of their default settings in the Advanced Options in case unintended changes are made while adjusting these settings.

The following Advanced Options are available:

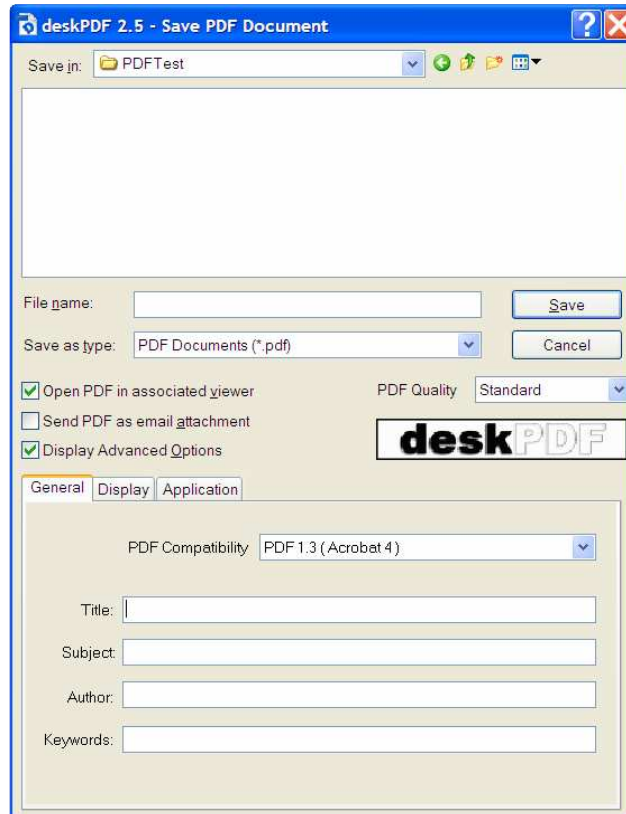
- **Paper/Output:** Users can adjust the print format such that the PDF documents can be properly printed on different sized paper.
- **Copy Count:** This capability is not relevant to deskPDF
- **Print Quality:** Adjusts the dpi of the PDF document. (has a direct impact on file size)
- **Image Color Management:** This capability is not relevant to deskPDF
- **Scaling:** This feature adjusts the PDF “image” size in relation to the Page size.
- **True Type Font:** Allows selection of device font or download as a soft font. Download as soft font is suggested.
- **PostScript Options:** The language level is the only relevant option. Select option 2 if using the Ghostscript Interpreter. Higher options can be used if using Adobe Distiller to adjust settings.

## Advanced Options

### General Tab

The following options are available for the *General tab*:

- **PDF Compatibility** – Setting this option adjusts the output from deskPDF to support a given compatibility level. Since readers are always backwards compatible, the newest reader can view previous versions of the PDF standard, whereas older PDF viewers might not be able to properly read the newer PDF specification. Acrobat 4 compatibility is recommended for general distribution as it provides rich functionality and can be viewed by the widest possible audience.
- **Document Meta Data** – This option allows the details to be associated with the PDF document. The document title is provided via the Windows print job name. Users can modify any of these settings as desired.

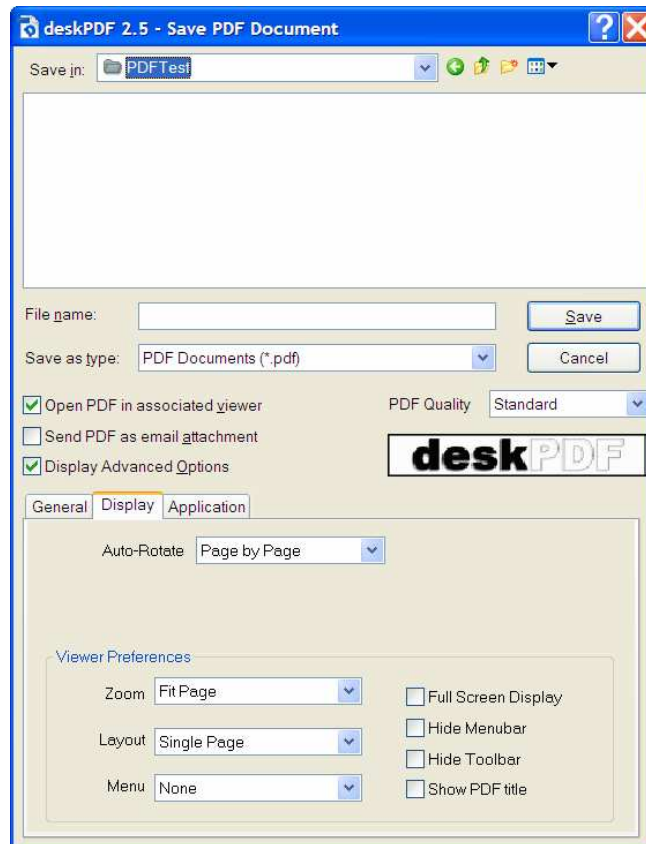


**Figure 6**  
Advanced Options - General Tab

## Display Tab

deskPDF Standard 2.5 allows the ability to modify the default display of your PDF when opened in a reader. These options are available in the *Display* tab as shown in *Figure 7*.

*Auto-Rotate Pages* automatically rotates pages based on the text orientation. For example, some pages designed to print landscape may require rotation to be viewed at the proper angle. Choose "None" to disable the *Auto-Rotate Pages* option. Choose "All" to rotate all pages in the document based on the orientation of the majority of text. Choose "PageByPage" to rotate each page based on the direction of the text on that page and choose "Force Landscape" if pages must be set in a landscape layout.



**Figure 7**  
Advanced Options - Display Tab

## Display Tab - Viewer Preferences

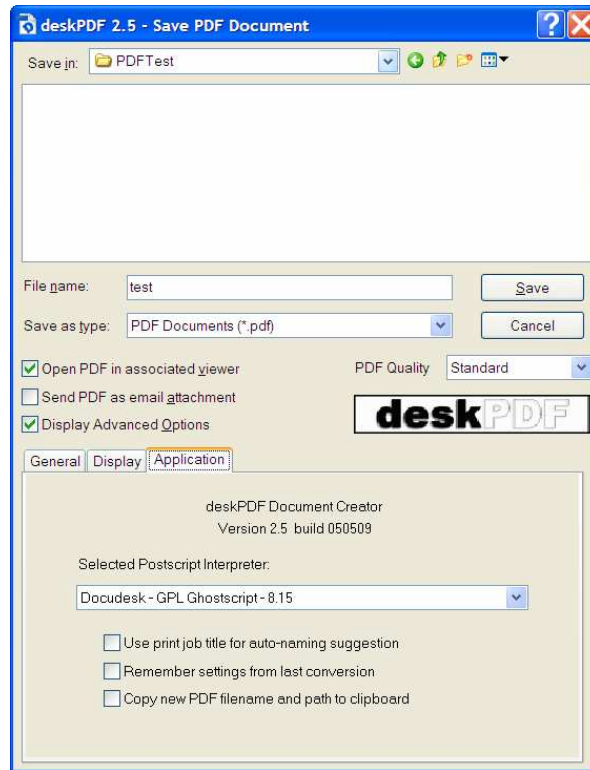
Within the *Display Tab*, there are viewer settings which allow for defining how the PDF will be presented to the person viewing the document.

The following viewer options can be set:

- **Zoom:** Preset options to set the zoom. Available options are: Fit to page, Fit to Width, 100%, 10%, 25%, 50%, 75%, 125%, 150%, 200%, 400%, 800%
- **Layout:** Configures how the viewer will display the pages: Options are: Single page, One Column, Facing, Two Columns L, Two and Columns R.
- **Menu:** Provides flexibility in displaying the left menu bar. Options are: None, Thumbnails, Bookmarks, and Hide Entire UI.
- **Full Screen Display:** Checkbox option which presents document to reader in a full screen sans any menus.
- **Hide Menubar:** Checkbox option which hides the menu bar from the reader.
- **Hide Toolbar:** Checkbox option which hides the toolbar from the reader
- **Show PDF Title:** When selected this option presents the PDF title as entered in the *General Tab*. Refer to *Figure 10*.

## Application Tab

This tab contains persistent settings for the deskPDF application including selection of the Postscript interpreter. deskPDF will automatically detect the compatible interpreters installed on the system and display them as options in the drop down selection. Users can select the “None” option. Selecting this option sets deskPDF to write pure PostScript files (i.e. files with the .ps extension) that can be used for prepress work or for distilling at a later time. This is the default configuration if no postscript interpreter is detected.



**Figure 8**

Advanced Options - Application Tab



**Note:** If Adobe Acrobat Distiller is not available, the GPL Postscript interpreter is freely available for download from the Docudesk web site. This interpreter gives an excellent blend of performance and quality.

deskPDF Standard 2.5 provides the following application level settings:

- **Use print job title for auto-naming suggestion** – When checked deskPDF will populate the *File Name* field with a name based on initial content found in the source document.
- **Remember settings from last conversion** – Selection of this checkbox will retain the settings chosen for subsequent document conversions. It is important to remember that profile selection and changes made by administrators can override this selection. (In the instance that the deskPDF installation is part of a network domain)
- **Copy new filename file name and path to clipboard** – When checked deskPDF automatically copies the file location and name to the clipboard. This function facilitates accurate pasting within other applications. This capability is useful if the file is saved on a network with a long path name or if IT administrators use the time/date naming extension function (i.e. for document security or archival purposes).

# Miscellaneous Notes

## Supported Languages

deskPDF can convert all languages including multi-byte languages such as Kanji. Additional fonts for creating non-English language PDF files are freely available for download from the deskPDF web site. At this time, the deskPDF user interface currently only supports English.

## deskPDF Administration

Enterprise implementations of deskPDF have several options for centralized deployment and implementation. For additional information please refer to the *Enterprise Deployment and Configuration Guide* located at

## Additional PDF Information

The following site provides additional information about the Portable Document Format standard.

<http://partners.adobe.com/asn/tech/pdf/specifications.jsp>

# Upgrading

## Upgrading from a Previous Version

Existing versions of deskPDF can be upgraded simply by installing the new version into the same directory as the existing version. The installer program should detect any prior versions. It is recommended to allow the installer to uninstall prior versions. Registered users will maintain their registration they acquired from the previous version unless the supported upgrade period has expired. For more information visit: <http://www.docudesk.com/support>

## **Known Issues**

### **Bugs/Compatibility/etc.**

There are currently no known issues to report with deskPDF 2.5.



**Docudesk**  
**20333 State Highway 249**  
**Suite 200**  
**Houston, Texas 77070**  
**USA**

[www.docudesk.com](http://www.docudesk.com)